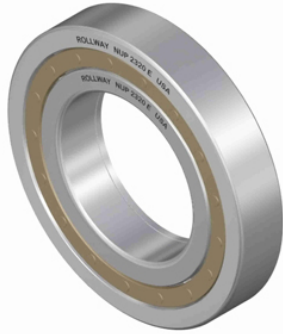




NTN PRECISION AXLE CORP.

120 mm x 215 mm x mm Rollway NU 224 EM Cylindrical Roller Bearings



Bearing No. NU 224 EM

d	120 mm
static load capacity:	461.00 kN
D	215 mm
precision rating:	ABEC 1
B	mm
bearing material:	52100 Bearing Steel
flanges:	(2) Flanges on Outer Ring
cage material:	Machined Brass
bore type:	Straight
outer ring type:	Outer Race Separable Both Directions
number of rows:	1
Weight	12.68 lbs
internal clearance:	C0
manufacturer catalog:	Click here
ring separation:	Inner Race - Separable both directions, Outer Race - Non-Separable
manufacturer upc number:	637410081376
dynamic load capacity:	359.39 kN

NU 224 EM Bearing 2D drawings and 3D CAD models