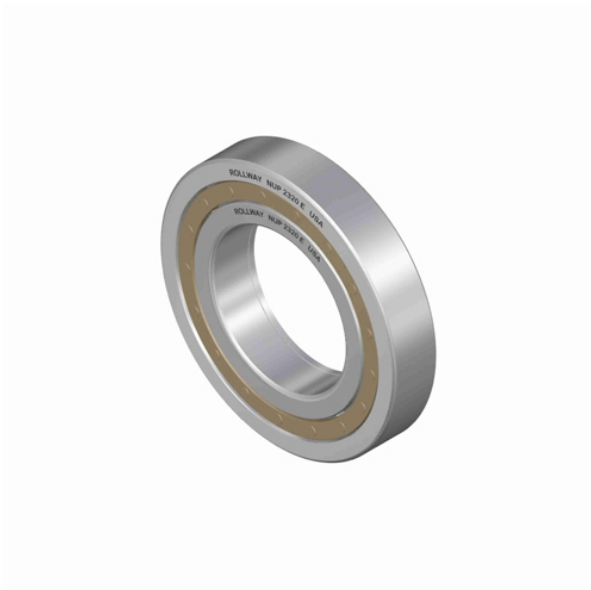




NTN PRECISION AXLE CORP.



100 mm x 215 mm x mm Rollway NU 320 EM Cylindrical Roller Bearings

Bearing No. NU 320 EM

d	100 mm
static load capacity:	426.99 kN
D	215 mm
precision rating:	ABEC 1
B	mm
bearing material:	52100 Bearing Steel
flanges:	(2) Flanges on Outer Ring
cage material:	Machined Brass
bore type:	Straight
outer ring type:	Outer Race Separable Both Directions
number of rows:	1
Weight	17.31 lbs
internal clearance:	C0
manufacturer catalog:	Click here
ring separation:	Inner Race - Separable both directions, Outer Race - Non-Separable
manufacturer upc number:	637410081390
dynamic load capacity:	380.99 kN

NU 320 EM Bearing 2D drawings and 3D CAD models