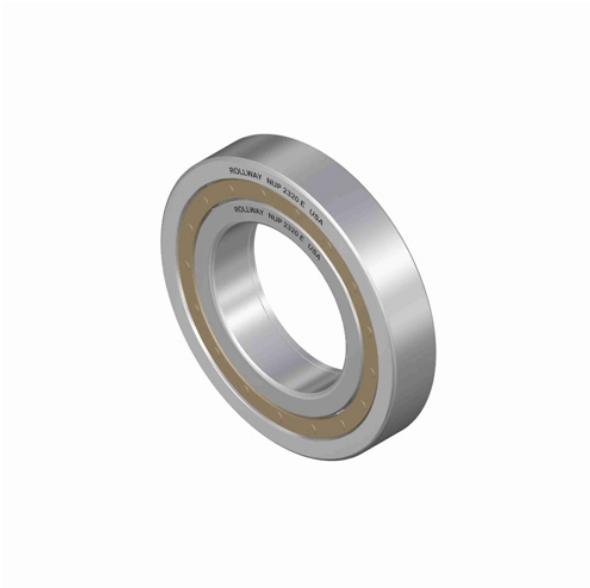




NTN PRECISION AXLE CORP.



120 mm x 260 mm x 17 mm Rollway NU 324 EM C3 Cylindrical Roller Bearings

Bearing No. NU 324 EM C3

d	120 mm
static load capacity:	644.00 kN
D	260 mm
precision rating:	ABEC 1
B	17 mm
bearing material:	52100 Bearing Steel
flanges:	(2) Flanges on Outer Ring
cage material:	Machined Brass
bore type:	Straight
outer ring type:	Outer Race Separable Both Directions
number of rows:	1
Weight	29.98 lbs
internal clearance:	C3
manufacturer catalog:	Click here
ring separation:	Inner Race - Separable both directions, Outer Race - Non-Separable
manufacturer upc number:	637410083103
dynamic load capacity:	548.99 kN

NU 324 EM C3 Bearing 2D drawings and 3D CAD models